

# Human CD3E&CD3G/CD3 epsilon&CD3 gamma Protein

Cat. No. CD3-HM257

## Description

<b>Source</b>	Recombinant Human CD3E&CD3G/CD3 epsilon&CD3 gamma Protein is expressed from HEK293 with hFc tag at the C-Terminus. It contains Asp23-Asp126(CD3E)&Gln23-Ser116(CD3G).
<b>Accession</b>	P07766(CD3E)&P09693(CD3G)
<b>Molecular Weight</b>	The protein has a predicted MW of 37.8 kDa (CD3E) and 36.5 kDa (CD3G). Due to glycosylation, the protein migrates to 40-60 kDa based on Tris-Bis PAGE result.
<b>Endotoxin</b>	Less than 1EU per µg by the LAL method.
<b>Purity</b>	> 95% as determined by Tris-Bis PAGE > 95% as determined by HPLC

## Formulation and Storage

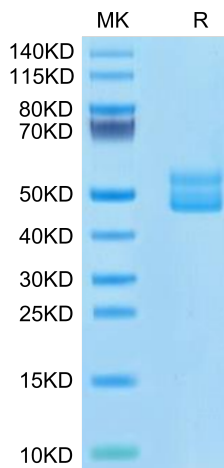
<b>Formulation</b>	Lyophilized from 0.22µm filtered solution in PBS (pH 7.4). Normally 8% trehalose is added as protectant before lyophilization.
<b>Reconstitution</b>	Centrifuge the tube before opening. Reconstituting to a concentration more than 100 µg/ml is recommended. Dissolve the lyophilized protein in distilled water.
<b>Storage</b>	-20 to -80°C for 12 months as supplied from date of receipt. -80°C for 3-6 months after reconstitution. 2-8°C for 2-7 days after reconstitution. Recommend to aliquot the protein into smaller quantities for optimal storage. Please minimize freeze-thaw cycles.

## Background

T-cell surface glycoprotein CD3 epsilon & CD3 gamma chain, also known as CD3E & CD3G, are single-pass type I membrane proteins. When antigen presenting cells (APCs) activate T-cell receptor (TCR), TCR-mediated signals are transmitted across the cell membrane by the CD3 chains CD3D, CD3E, CD3G and CD3Z. All CD3 chains contain immunoreceptor tyrosine-based activation motifs (ITAMs) in their cytoplasmic domain.

## Assay Data

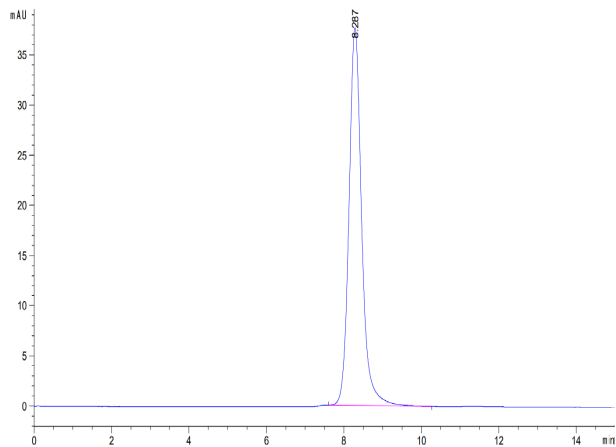
### Tris-Bis PAGE



Human CD3E&CD3G/CD3 epsilon&CD3 gamma on Tris-Bis PAGE under reduced condition. The purity is greater than 95%.

### SEC-HPLC

Assay Data



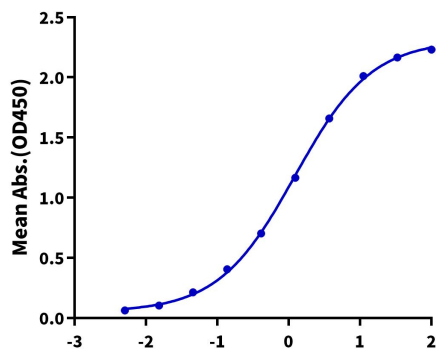
The purity of Human CD3E&CD3G/CD3 Epsilon&CD3 Gamma was greater than 95% as determined by SEC-HPLC.

Assay Data

ELISA Data

**Human CD3E&CD3G, hFc Tag ELISA**

0.05µg Human CD3E&CD3G, hFc Tag Per Well



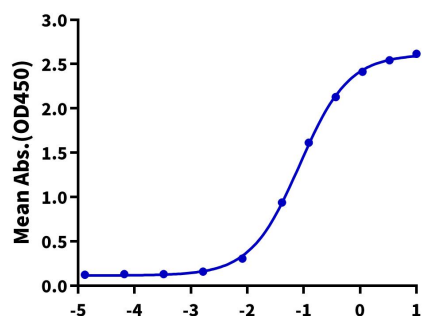
Immobilized Human CD3E&CD3G, hFc Tag at 0.5µg/ml (100µl/Well). Dose response curve for Biotinylated Anti-CD3E&CD3G Ab.1, hFc Tag with the EC50 of 1.22ug/ml determined by ELISA.

Log Biotinylated Anti-CD3E&CD3G Ab.1, hFc Tag Conc.(µg/ml)

ELISA Data

**Human CD3E&CD3G, hFc Tag ELISA**

0.1µg Human CD3E&CD3G, hFc Tag Per Well



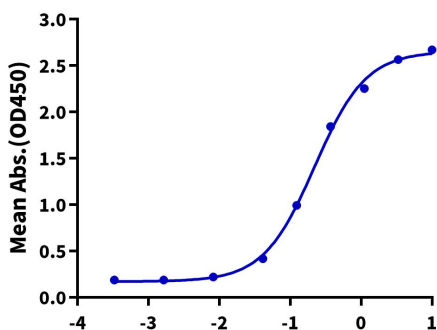
Immobilized Human CD3E&CD3G, hFc Tag at 1µg/ml (100µl/Well). Dose response curve for Anti-CD3E&CD3G Ab.2, mFc Tag with the EC50 of 20.7ng/ml determined by ELISA (QC Test).

Log Anti-CD3E&CD3G Ab.2, mFc Tag Conc.(µg/ml)

ELISA Data

**Human CD3E&CD3G, hFc Tag ELISA**

0.1µg Tebentafusp, His Tag Per Well



Immobilized Tebentafusp, His Tag at 1µg/ml (100µl/well) on the plate. Dose response curve for Human CD3E&CD3G, hFc Tag with the EC50 of 0.22µg/ml determined by ELISA.

Log Human CD3E&CD3G, hFc Tag Conc.(µg/ml)